

Sleeve anchor FSA-B



Usage

Suitable for:

- Concrete C12/15 to C50/60
- Natural stone with dense structure

For fixing of:

- Steel constructions
- Gratings
- Handrails
- Consoles
- Ladders
- Machines
- Gates

Description

- Light sleeve anchor for push-through installation.
- When the hexagon nut or bolt is tightened, the tapered bolt is pulled into the expansion sleeve and expands it against the hole wall.

Examples of use



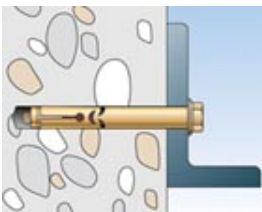
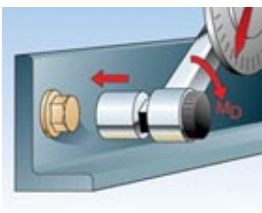
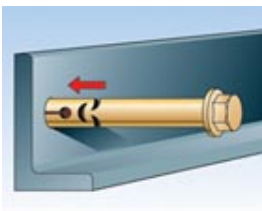
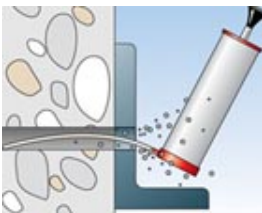
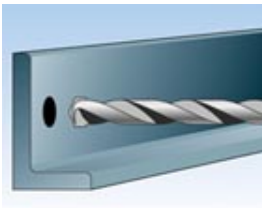
Installation

Type of installation

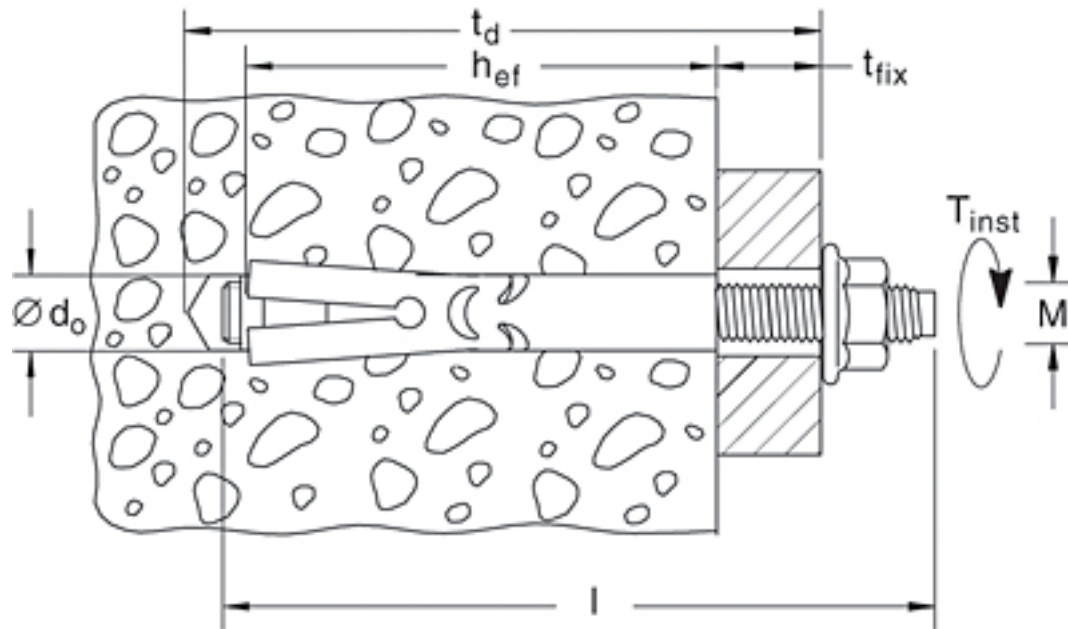
- Push-through installation

Installation tip



- Only for use in dry indoor rooms.



Technical data



Type	Art.-No.	ETA ■ DIBt ●	drill d_o [mm]	min. drill-hole depth for through fixings t_d [mm]	effect. anchoring depth h_{ef} [mm]	anchor length l [mm]	max. usable length t_{fix} [mm]	thread M	width across nut	Washer (outer diameter x thickness) [mm]
FSA 8/15 B	68500	-	8,0	65	35	65	15	M 6	10	18 x 1,6
FSA 8/40 B	68501	-	8,0	90	35	90	40	M 6	10	18 x 1,6
FSA 8/65 B	68502	-	8,0	115	35	115	65	M 6	10	18 x 1,6
FSA 10/10 B	68503	-	10	65	40	69	10	M 8	13	16 x 1,6
FSA 10/35 B	68504	-	10	90	40	94	35	M 8	13	16 x 1,6
FSA 10/60 B	68505	-	10	115	40	119	60	M 8	13	16 x 1,6
FSA 12/10 B	68506	-	12	75	50	81	10	M 10	17	20 x 2

Type	Art.-No.	ETA  DIBt 	drill d_o [mm]	min. drill-hole depth for through fixings t_d [mm]	effect. anchoring depth h_{ef} [mm]	anchor length l [mm]	max. usable length t_{fix} [mm]	thread M	width across nut	Washer (outer diameter x thickness) [mm]
FSA 12/25 B	68507	-	12	90	50	96	25	M 10	17	20 x 2
FSA 12/50 B	68508	-	12	115	50	121	50	M 10	17	20 x 2
FSA 12/75 B	68509	-	12	140	50	146	75	M 10	17	20 x 2